

Summary

QUEENS LAKE

2016 EB

Species List.

Common Name	N	CPUE #/hr	Kg/hr
Bass, largemouth	189	283.50	181.22
Bluegill	866	1299.00	7.79
Crappie, black	52	78.00	1.51
Eel, American	6	9.00	
Shad, gizzard	42	63.00	
Shiner, golden	9	13.50	
Sunfish, redear	48	72.00	21.72

Catch per unit effort (#/hr) of major species caught at site.

Species	Year	Tot	N	Young	n	Stock	n	Qual	n	Prefer	n	Mem	n	Troph	n
Bass, largemouth	2016	283.5	189	103.5	69	180.0	120	160.5	107	112.5	75	10.5	7	0.0	0
Bluegill	2016	1299.0	866	315.0	210	984.0	656	51.0	34	4.5	3	0.0	0	0.0	0
Crappie, black	2016	78.0	52	67.5	45	10.5	7	0.0	0	0.0	0	0.0	0	0.0	0
Shad, gizzard	2016	63.0	42	18.0	12	45.0	30	0.0	0	0.0	0	0.0	0	0.0	0
Sunfish, redear	2016	72.0	48	3.0	2	69.0	46	49.5	33	43.5	29	31.5	21	0.0	0

Relative Weight for major species.

Common Name	Year	Wr	Wr(Stock)	Wr(Quality)	Wr(Preferred)	Wr(Memorable)	Wr(Trophy)
Bass, largemouth	2016	97	97	97	97	105	
Bluegill	2016	104	104	92	87		
Crappie, black	2016	105	105				
Sunfish, redear	2016	95	95	98	98	97	

Population indices for major species.

Common Name	PSD	RSD-P	RSD-M	RSD-T
Bass, largemouth	89	62	6	0
Bluegill	5	0	0	0
Crappie, black	0	0	0	0
Shad, gizzard	0	0	0	0
Sunfish, redear	72	63	46	0

Collections

Queens Lake

Run
1

10/26/2016

Sampling Gear Used: EB

Species List

Sampling Effort (sec.): 1200

Common Name	N	CPUE #/hr	Tot. Wt.	Kg/hr
Bass, largemouth	112	336.0	59255	177.77
Bluegill	583	1749.0	2733	8.20
Crappie, black	47	141.0	840	2.52
Eel, American	6	18.0		
Shad, gizzard	19	57.0		
Shiner, golden	2	6.0		
Sunfish, redear	21	63.0	5627	16.88

CM-Class Summary Information

Common Name	CM-Class	n	Total Weight (g)	CPUE (#/hr)
Bass, largemouth	6	1	14.0	3.0
Bass, largemouth	7	4	22.0	12.0
Bass, largemouth	8	16	137.0	48.0
Bass, largemouth	9	4	50.0	12.0
Bass, largemouth	10	11	171.0	33.0
Bass, largemouth	11	7	124.0	21.0
Bass, largemouth	13	2	46.0	6.0
Bass, largemouth	14	3	107.0	9.0
Bass, largemouth	16	2	105.0	6.0
Bass, largemouth	20	1	96.0	3.0
Bass, largemouth	22	2	283.0	6.0
Bass, largemouth	23	1	163.0	3.0
Bass, largemouth	25	2	429.0	6.0
Bass, largemouth	27	1	255.0	3.0
Bass, largemouth	29	1	334.0	3.0
Bass, largemouth	30	1	440.0	3.0
Bass, largemouth	31	1	430.0	3.0
Bass, largemouth	32	1	521.0	3.0
Bass, largemouth	34	7	4033.0	21.0
Bass, largemouth	37	5	3958.0	15.0
Bass, largemouth	38	2	1498.0	6.0
Bass, largemouth	39	3	2648.0	9.0
Bass, largemouth	40	4	3885.0	12.0
Bass, largemouth	41	7	7147.0	21.0
Bass, largemouth	42	4	4310.0	12.0
Bass, largemouth	43	4	4689.0	12.0
Bass, largemouth	44	3	3621.0	9.0
Bass, largemouth	45	1	1308.0	3.0
Bass, largemouth	46	6	8521.0	18.0
Bass, largemouth	47	2	3177.0	6.0
Bass, largemouth	50	1	2447.0	3.0
Bass, largemouth	51	2	4286.0	6.0
Bluegill	2	4		12.0
Bluegill	3	11		33.0
Bluegill	4	13		39.0
Bluegill	5	19		57.0

Collections

Queens Lake

Run
1

10/26/2016

Common Name	CM-Class	n	Total Weight (g)	CPUE (#/hr)
Bluegill	6	31		93.0
Bluegill	7	88		264.0
Bluegill	8	95	208.0	285.0
Bluegill	9	92	300.0	276.0
Bluegill	10	92	240.0	276.0
Bluegill	11	62	236.0	186.0
Bluegill	12	42	421.0	126.0
Bluegill	13	17	34.0	51.0
Bluegill	14	3		9.0
Bluegill	15	5	362.0	15.0
Bluegill	16	4	331.0	12.0
Bluegill	17	3	327.0	9.0
Bluegill	18	1	117.0	3.0
Bluegill	19	1	157.0	3.0
Crappie, black	8	11	73.0	33.0
Crappie, black	9	15	163.0	45.0
Crappie, black	10	5	66.0	15.0
Crappie, black	11	8	172.0	24.0
Crappie, black	12	2	52.0	6.0
Crappie, black	13	2	74.0	6.0
Crappie, black	15	1	40.0	3.0
Crappie, black	16	1	55.0	3.0
Crappie, black	17	1	75.0	3.0
Crappie, black	18	1	70.0	3.0
Eel, American	28	2		6.0
Eel, American	30	1		3.0
Eel, American	32	2		6.0
Eel, American	63	1		3.0
Shad, gizzard	14	1		3.0
Shad, gizzard	15	2		6.0
Shad, gizzard	16	3		9.0
Shad, gizzard	17	3		9.0
Shad, gizzard	19	2		6.0
Shad, gizzard	21	4		12.0
Shad, gizzard	22	3		9.0
Shad, gizzard	23	1		3.0
Shiner, golden	9	1		3.0
Shiner, golden	14	1		3.0
Sunfish, redear	7	2	11.0	6.0
Sunfish, redear	11	1	14.0	3.0
Sunfish, redear	12	1	30.0	3.0
Sunfish, redear	14	1	45.0	3.0
Sunfish, redear	15	2	129.0	6.0
Sunfish, redear	16	1	90.0	3.0
Sunfish, redear	17	2	199.0	6.0
Sunfish, redear	23	1	260.0	3.0
Sunfish, redear	28	5	2371.0	15.0

Collections

Queens Lake

RUN
1

10/26/2016

Common Name	CM-Class	n	Total Weight (g)	CPUE (#/hr)
Sunfish, redear	29	5	2478.0	15.0

Fish length-weight Information: (based on data entered in the per fish length-weight format)

Species	n	Mean tl (mm)	Min. tl	Max. tl
Bass, largemouth	112	260.3	62	512
Bluegill	583	93.1	22	192
Crappie, black	47	106.9	81	181
Eel, American	6	360.0	285	635
Shad, gizzard	19	191.1	143	231
Shiner, golden	2	120.0	98	142
Sunfish, redear	21	212.0	72	292

Collections

Queens Lake

Run
2

10/26/2016

Sampling Gear Used: EB

Species List

Sampling Effort (sec.): 1200

Common Name	N	CPUE #/hr	Tot. Wt.	Kg/hr
Bass, largemouth	77	231.0	61561	184.68
Bluegill	283	849.0	2463	7.39
Crappie, black	5	15.0	165	0.50
Shad, gizzard	23	69.0		
Shiner, golden	7	21.0		
Sunfish, redear	27	81.0	8850	26.55

CM-Class Summary Information

Common Name	CM-Class	n	Total Weight (g)	CPUE (#/hr)
Bass, largemouth	7	2	10.0	6.0
Bass, largemouth	8	1	11.0	3.0
Bass, largemouth	9	7	79.0	21.0
Bass, largemouth	10	4	48.0	12.0
Bass, largemouth	11	1	19.0	3.0
Bass, largemouth	12	3	62.0	9.0
Bass, largemouth	16	1	51.0	3.0
Bass, largemouth	20	2	211.0	6.0
Bass, largemouth	24	1	189.0	3.0
Bass, largemouth	27	1	314.0	3.0
Bass, largemouth	28	1	331.0	3.0
Bass, largemouth	30	4	1571.0	12.0
Bass, largemouth	32	1	536.0	3.0
Bass, largemouth	35	5	3609.0	15.0
Bass, largemouth	36	4	2765.0	12.0
Bass, largemouth	37	3	2390.0	9.0
Bass, largemouth	38	7	5658.0	21.0
Bass, largemouth	39	3	2692.0	9.0
Bass, largemouth	40	6	5975.0	18.0
Bass, largemouth	41	1	1030.0	3.0
Bass, largemouth	42	5	5982.0	15.0
Bass, largemouth	43	1	1130.0	3.0
Bass, largemouth	44	1	1128.0	3.0
Bass, largemouth	45	1	1509.0	3.0
Bass, largemouth	46	3	4596.0	9.0
Bass, largemouth	47	1	1560.0	3.0
Bass, largemouth	48	1	1942.0	3.0
Bass, largemouth	49	1	2115.0	3.0
Bass, largemouth	51	1	2082.0	3.0
Bass, largemouth	52	1	2150.0	3.0
Bass, largemouth	54	1	2961.0	3.0
Bass, largemouth	56	1	3185.0	3.0
Bass, largemouth	58	1	3670.0	3.0
Bluegill	4	4		12.0
Bluegill	5	9		27.0
Bluegill	6	4		12.0
Bluegill	7	27		81.0

Collections

Queens Lake

Run
2

10/26/2016

Common Name	CM-Class	n	Total Weight (g)	CPUE (#/hr)
Bluegill	8	41		123.0
Bluegill	9	58		174.0
Bluegill	10	41		123.0
Bluegill	11	32		96.0
Bluegill	12	29		87.0
Bluegill	13	11		33.0
Bluegill	14	7		21.0
Bluegill	15	2	129.0	6.0
Bluegill	16	2	180.0	6.0
Bluegill	17	7	723.0	21.0
Bluegill	18	2	261.0	6.0
Bluegill	19	4	634.0	12.0
Bluegill	20	2	344.0	6.0
Bluegill	21	1	192.0	3.0
Crappie, black	9	4	47.0	12.0
Crappie, black	17	1	118.0	3.0
Shad, gizzard	10	1		3.0
Shad, gizzard	16	1		3.0
Shad, gizzard	17	1		3.0
Shad, gizzard	18	4		12.0
Shad, gizzard	19	4		12.0
Shad, gizzard	20	2		6.0
Shad, gizzard	21	3		9.0
Shad, gizzard	22	2		6.0
Shad, gizzard	23	3		9.0
Shad, gizzard	24	1		3.0
Shad, gizzard	25	1		3.0
Shiner, golden	15	4		12.0
Shiner, golden	17	3		9.0
Sunfish, redear	12	1	31.0	3.0
Sunfish, redear	14	2	107.0	6.0
Sunfish, redear	15	1	66.0	3.0
Sunfish, redear	16	1	96.0	3.0
Sunfish, redear	18	1	118.0	3.0
Sunfish, redear	20	1	163.0	3.0
Sunfish, redear	21	1	187.0	3.0
Sunfish, redear	22	1	237.0	3.0
Sunfish, redear	24	2	599.0	6.0
Sunfish, redear	25	4	1354.0	12.0
Sunfish, redear	27	1	448.0	3.0
Sunfish, redear	28	7	3404.0	21.0
Sunfish, redear	29	4	2040.0	12.0

Collections

Queens Lake

RUN
2

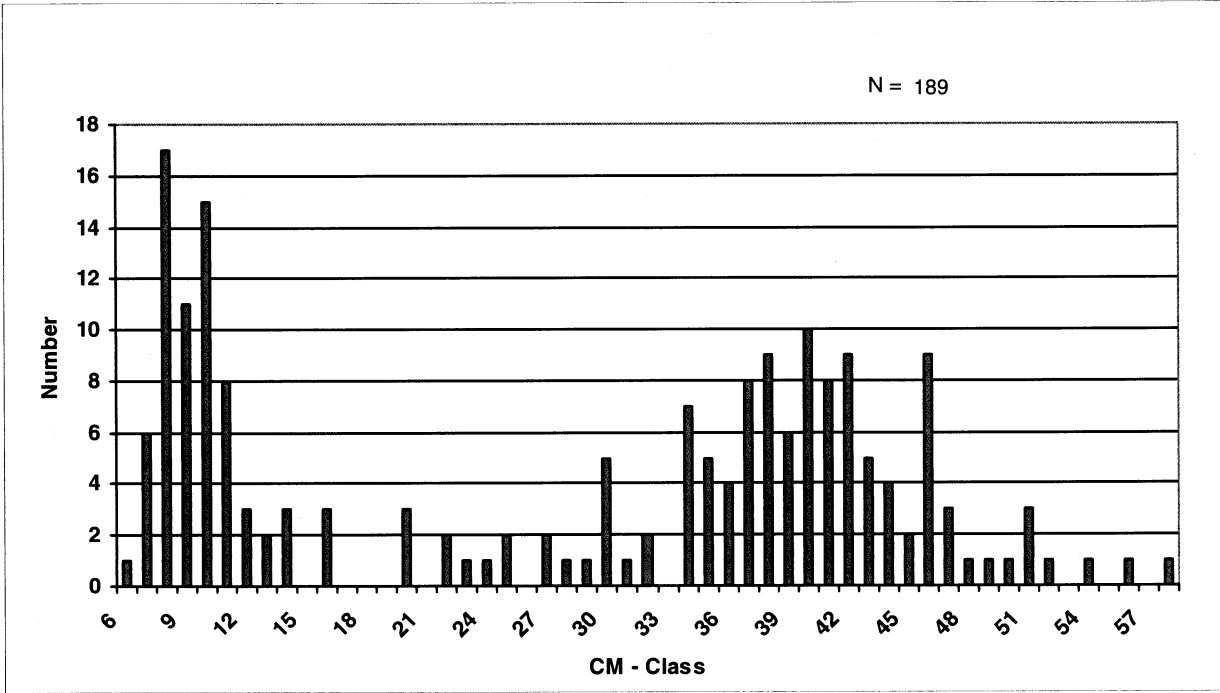
10/26/2016

Fish length-weight Information: (based on data entered in the per fish length-weight format)

Species	n	Mean tl (mm)	Min. tl	Max. tl
Bass, largemouth	77	322.6	72	581
Bluegill	283	104.3	42	215
Crappie, black	5	111.6	92	178
Shad, gizzard	23	202.4	105	250
Shiner, golden	7	163.4	152	178
Sunfish, redear	27	241.0	122	295

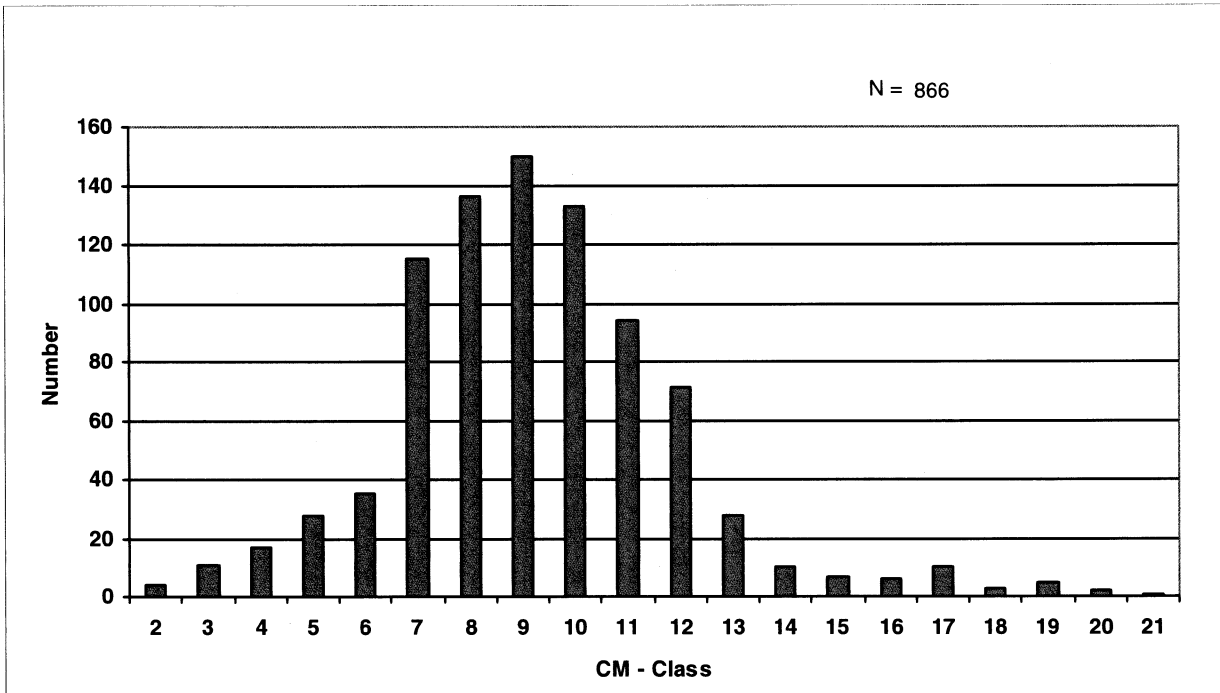
Queens Lake
Bass, largemouth
Micropterus salmoides

2016



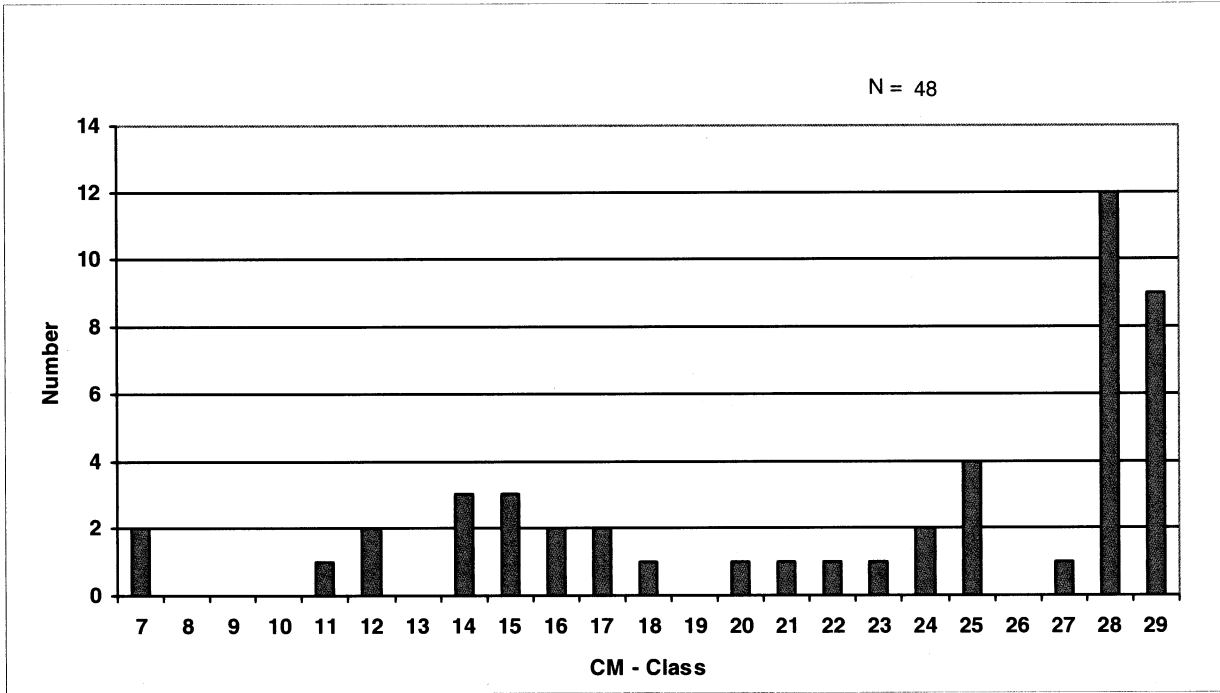
Queens Lake
Bluegill
Lepomis macrochirus

2016



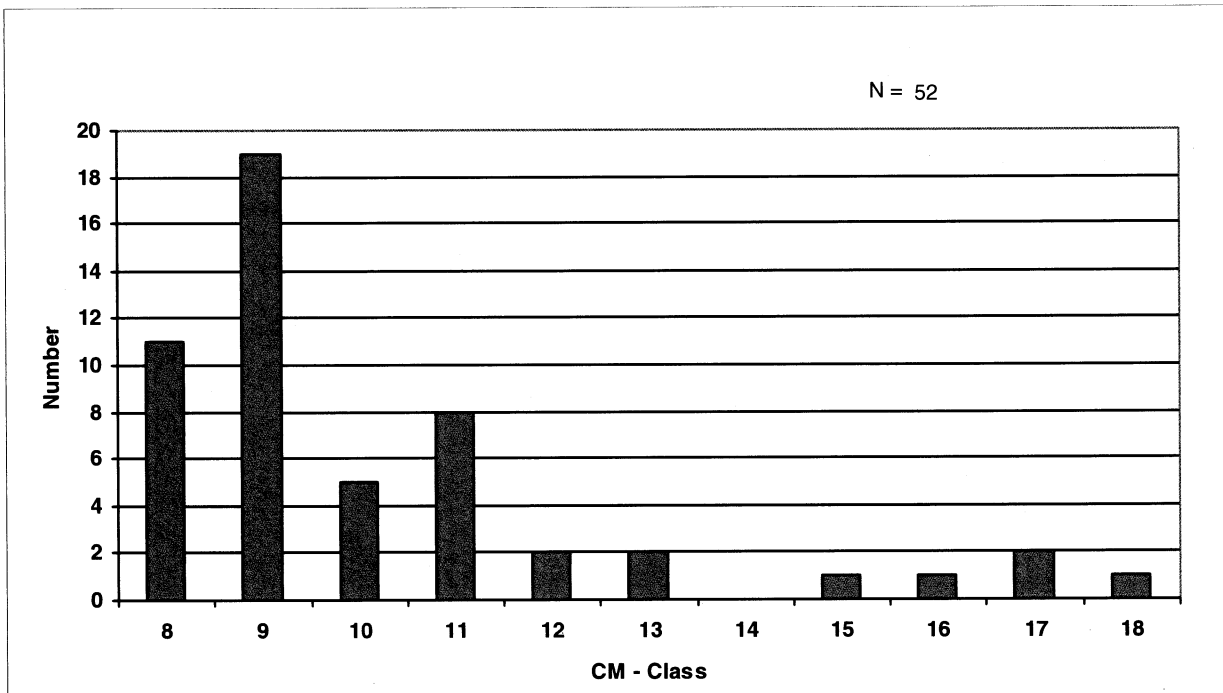
Queens Lake
Sunfish, redear
Lepomis microlophus

2016



Queens Lake
Crappie, black
Pomoxis nigromaculatus

2016



Queens Lake
Shad, gizzard
Dorosoma cepedianum

2016

