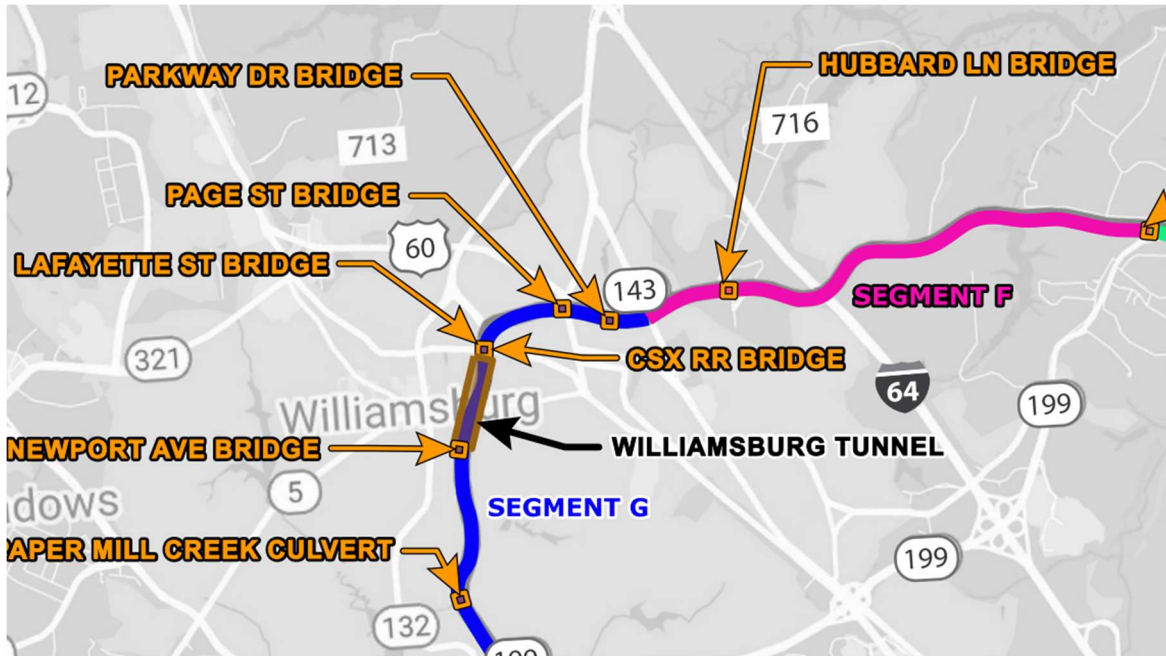


Projected Traffic Delays during Phase 3 of the Colonial Parkway Rehabilitation Project



Parkway Closure Schedule

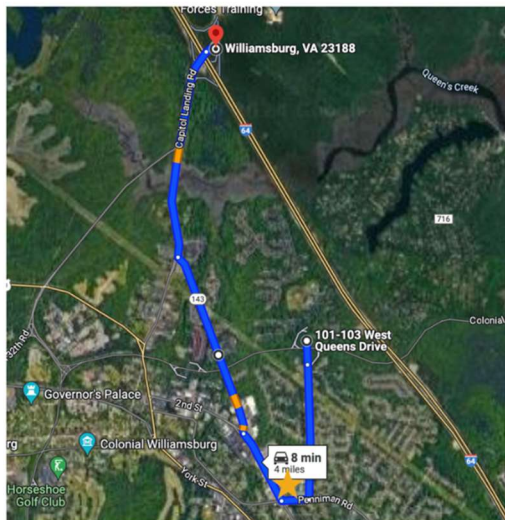
Parkway Closure Schedule	2023				2024				2025				2026			
	Winter	Spring	Summer	Fall	Winter	Spring	Summer	Fall	Winter	Spring	Summer	Fall	Winter	Spring	Summer	Fall
Segment A																
Segment D																
Segment E																
Segment F																
Segment G																
Segment G: Route 199 to Tunnel																
Segment G: Route 199 to Circle																
Segment G: Newport Avenue to Parkway Drive																
Segment G: Circle to Parkway Drive																

Greetings QL,

We should project possible detour traffic delays during Phase 3 of the Colonial Parkway Rehabilitation Project. See Phase 3 map and timeline above. The Colonial Parkway closures of segments F and G happening simultaneously during Phase 3 result in Queens Lake and the nearby neighborhoods all being forced to use the detour route around Magruder Elementary. Our

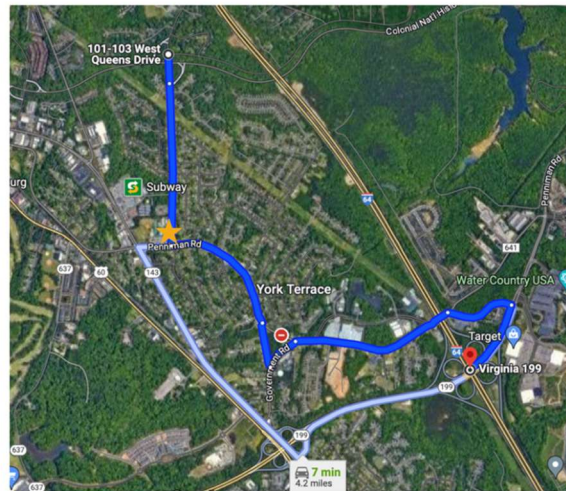
detour routes to I-64 are displayed below. The Parkway closure during Phase 3 is projected to be 12-18 months beginning in Winter 2024.

Route 1: I-64 North Access



★ = Magruder Elementary

Route 2: I-64 South Access



★ = Magruder Elementary

As you are aware, traffic is directed by the School Resource officer during school arrival (8:55AM) and dismissal (3:55PM) times, which results in slower traffic around the corner of Hubbard and Penniman. With the increased traffic flow, the traveling public have increased risk as many young students and their families cross Hubbard to access the sidewalk to the school.

Advocacy efforts have been made with the county and VDOT for alternate solutions to a possible traffic delay at Hubbard and Penniman. With the potential traffic delay bottlenecking over 1,000 homes via one exit point, we also face emergency response challenges if the need for evacuation occurs. In addition, when traffic is delayed, vehicles have the potential to block Fire Station 3.

We are working with Doug Holroyd, our District 1 Supervisor, to address the need with the Board of Supervisors and to engage our public officials and agencies.

Doug Holroyd's message to Queens Lake, "Mixed blessings with the CP [Colonial Parkway] construction. Closing off Segment G and F simultaneously is a large issue; I'll continue to focus the County on that issue. The bright side, it gives us a potential path for QL dredging and improvements."

Interested in how you can help?

Provide your input via the Impact Survey available here: [Parkway Project Impact Survey](#) or on the QL website Community Affairs tab under York County > Colonial Parkway Project.

Sincerely,
Sarah Robison, Community Affairs Director

You can find out more information about the current project status and other Parkway Project information at: <https://www.nps.gov/colo/planyourvisit/colo-parkway-rehab.htm>